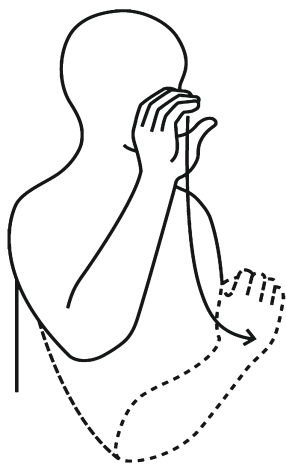
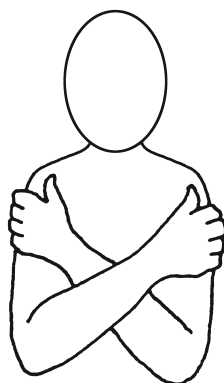


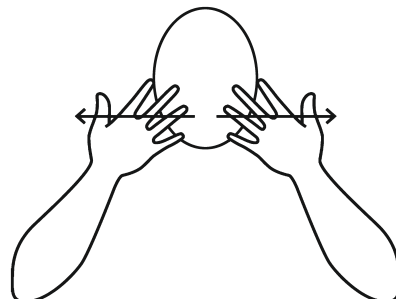
# Can you sign some of the words in the **ELMER** and the **LOST TEDDY** story?



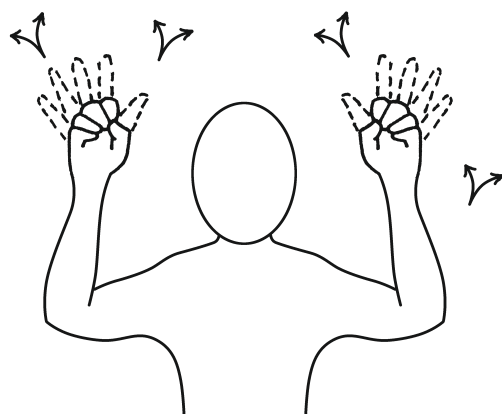
**Elephant**  
Cupped hand shows shape of trunk



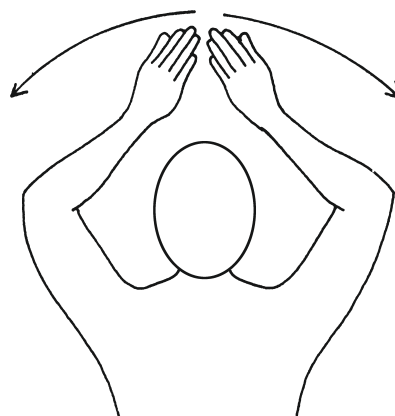
**Teddy**  
Hands clasp upper arms



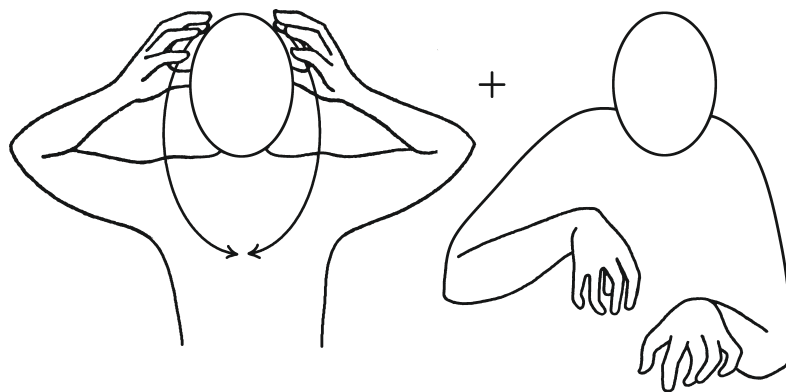
**Tiger**



**Stars**  
Place several small star lights above head as if in sky

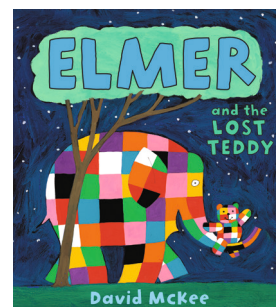


**Sky**



**Lion**

Clawed hands mime plodding



Makaton is a language programme that gives everyone a helping hand to communicate. It is designed to support spoken language by using signs and symbols with speech. This helps provide extra clues about what someone is saying. Makaton connects people to the world around them. For further information visit [makaton.org](http://makaton.org)